

### Table of Contents

- 1 Product Description
- 1 Features and General Specifications
- 2 Mechanical Characteristics
- 3 Optical Specifications
- 4 Ordering from LUXTECH

Request Samples & Pricing [Here](#)

### PRODUCT DESCRIPTION

LUXlens Linear Batwing is LUXTECH's specially engineered optic designed specifically for use with our LUXroll product line. With a 96° peak intensity beam spread and excellent color over angle uniformity, this lens is optimized for uplighting or applications where a wide light distribution is required.



### TECHNICAL SPECIFICATIONS

#### Mechanical Information

- Low Profile Form factor
- Compatible with LUXroll CC
- 47" Standard Length, Cuttable
- Direct to PCB Mounting
- Material: Acrylic (PMMA)

#### Photometric Performance

- Measured Efficiency: 92%
- Peak Intensity Angle (from Nadir): 48°
- CCT Shift: <50 K
- Superior Color Over Angle Performance

#### Lifetime Information

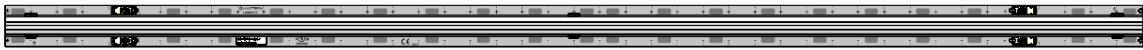
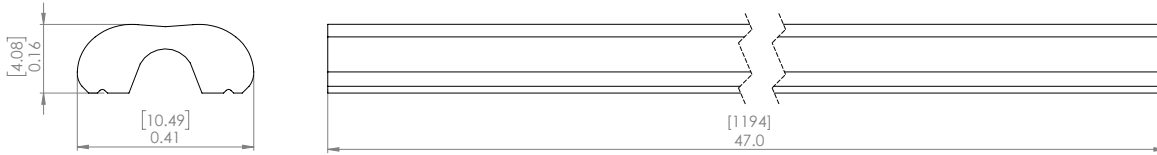
- 2-Year Warranty

Request Samples & Pricing [Here](#)

### MECHANICAL CHARACTERISTICS

Technical Drawing

Units: [inches] mm



### Product Dimensions

PARAMETER	SPECIFICATION
Width	0.41"
Height	0.16"
Length	47"
Max Recommended Clip Spacing	12"

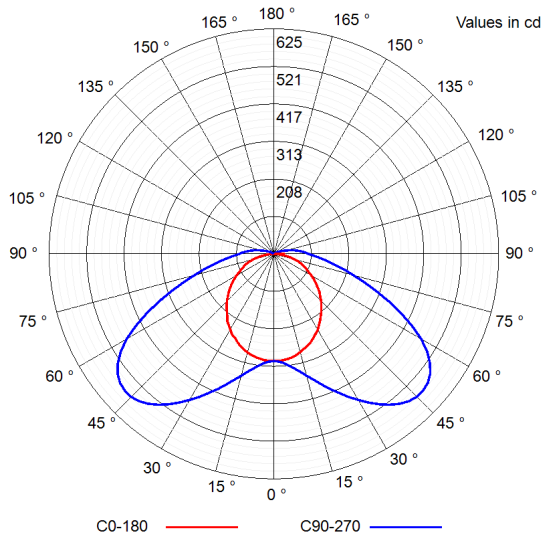
### LUXTECH COMPATIBLE MODULES

BRAND	MODEL
LUXTECH	LUXroll CC
LUXTECH	LUXslim CC

Design resources: IES and installation guide available at [LUXTECH.com](http://LUXTECH.com)

### OPTICAL SPECIFICATIONS

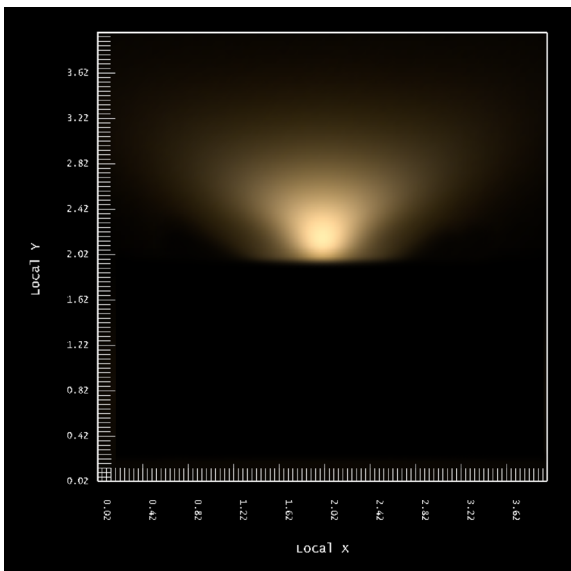
#### CANDELA DISTRIBUTION PLOT



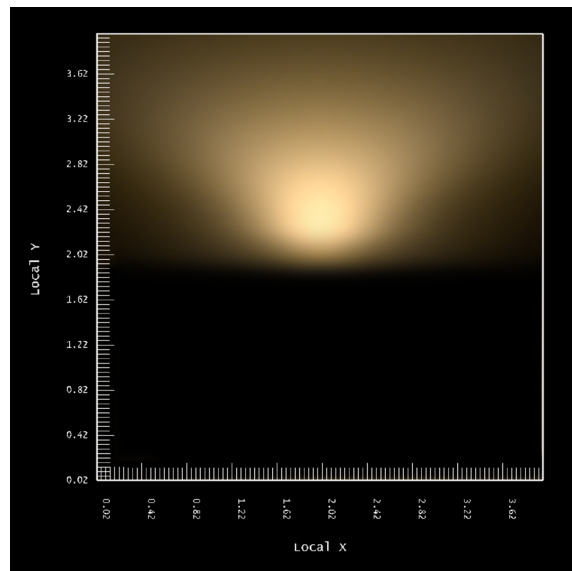
\*Measured with LUXroll CC

#### PLANAR ILLUMINANCE FIGURES

1' Planar Illuminance



2' Planar Illuminance



Request Samples & Pricing [Here](#)

### ORDERING CODES

PRODUCT FAMILY	FORM FACTOR	LENGTH	BEAM SHAPE
LUXlens	LR	47	BW

\*Normally Stocked

Example: LUXlens-LR-47-BW