

INTRODUCTION

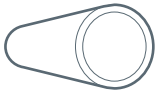
LUXwrap Pro is engineered to streamline the illumination of cylindrical fixtures, delivering a faster, more intuitive, and highly consistent assembly process. LUXwrap Pro ensures perfectly even light distribution every time.

Although LUXwrap Pro modules include built-in ESD protection, proper ESD precautions should still be taken to protect the LEDs and ensure long-term reliability.

CUSTOMER RECOMMENDED PARTS



ESD Strap



Internal Rod

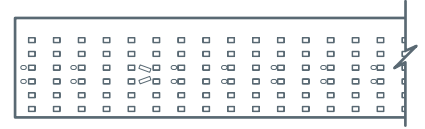


Scissors



Foam Roller
(information available on website)

WHAT'S INCLUDED



LUXwrap Pro module

INSTALLATION

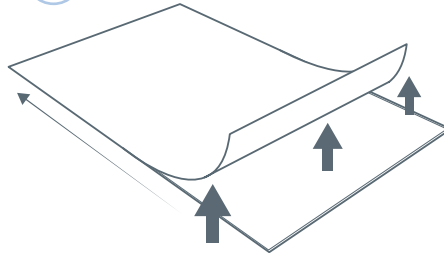
1



Position the module

Once you cut your LUXwrap Pro to desired length, place module flat on the table in front of you with the LED side **down**.

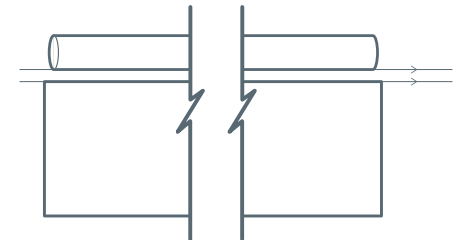
2



Remove release liner

Carefully peel away the protective release liner along the entire module as instructed. Keep fingers away from LED surfaces.

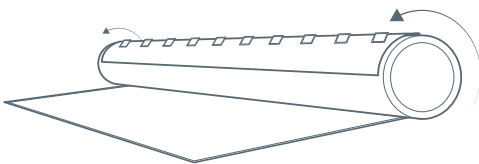
3



Align module and rod edges

With the tape removed, align the internal rod parallel to the designated edge of LUXwrap. Gently set the rod onto the module, then proceed to Step 4.

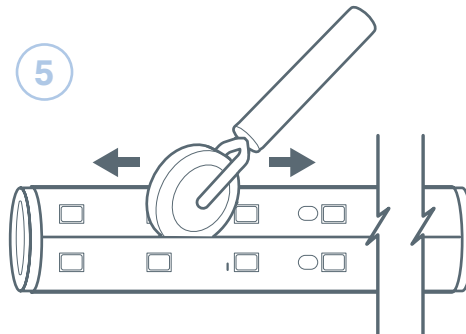
4



Wrap module

Once adhered, continue tightly wrapping the module around the rod until it fully encloses it, creating a seamless cylindrical module.

5

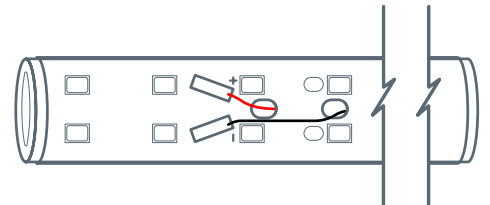


Firmly secure adhesion

Once the module is fully wrapped around the rod and adhered to itself, use a sponge roller (or similar tool) to firmly press along the seam. This ensures proper adhesion and helps prevent peeling.

Tip: Keep the module clean and avoid handling it during installation.

6



Insert wires & connect

Identify the best poke-in connectors and adjacent provided holes for routing the supply wires into the connectors. Route the wires through the internal rod and connect to the manufacturer's light.